

The logo features the text "GW KIL" in a large, blue, serif font. A registered trademark symbol (®) is located at the top right of the "W". The background is white with a faint, light blue outline of a city skyline. The skyline includes several tall buildings on the left and a single, very tall, thin tower on the right. The entire logo is enclosed within a blue rectangular border.

# GW<sup>®</sup> KIL

December 8 - 10, 2017

*IN REVIEW*

# GALLERY WEEKEND™ Kuala Lumpur

## *Mapping the Multidiscipline*

Gallery Weekend Kuala Lumpur (GWKL™) is built on the success of the inaugural GWKL 2016, with a more ambitious Program of events and exhibitions highlighting the best of Malaysian cultural talent. Collaborations between major public institutions, commercial galleries, private collections and independent and artist-run spaces provided a snapshot of the diversity of Kuala Lumpur's creative scene. Increased attendance across the 3-day celebration highlights the growing traction of the annual event, and the success of efforts made to grow participation. GWKL 2017 saw the introduction of Gourmet Partnerships, pairing bespoke gourmet experiences with galleries and institutions according to location. Dynamic and Diverse with access to All.

*"This is a brilliant initiative to showcase the rich heritage and new artistic impetuosity coming out of the region, a most memorable few days." Dr. Hugo Weihe, CEO Saffron Art, former Asia Director Christie's.*

*The KL Gallery Weekend was a fabulous possibility to become familiar with the art and culture of Malaysia that is not so well known in Europe. A few wonderful days of exchange, inspiration and discoveries that were so much more interesting than just visiting the same places again and again. Definitely a big step in the right direction. Herwig Kempinger, Director, Vienna Secession*

*"Gallery Weekend Kuala Lumpur 2017 provided expert insights into its city's burgeoning contemporary art scene and cultural infrastructure. The lively and informative programme introduced us to the wide range of galleries, museums, and arts professionals active across KL's far-flung urban districts, helping to better appreciate contemporary Malaysian art in an international context." Sarah Ichioka, Design and Arts Commentator*

*"The Gallery Weekend KL provided visitors like myself with fast-track access to the city's rapidly growing art scene. Well-organized and including a wide range of events, it offered many opportunities for in-depth conversation with local artists, gallerists, collectors, curators, and museum directors. Gallery Weekend KL opened my eyes to the unexpected riches of KL's artistic culture." Christopher Phillips, Curator & Advisor, ICP.*

*"The GWKL is a great initiative and will undoubtedly help reinforce the identity of KL and draw strong attention over time." Hanif Kara, UK. AKTH, Professor, Harvard Graduate School of Design.*

*We thank our pioneering supporters for valuable collaboration:*

CENDANA, Marini's Group, Stripes Hotel, Grab, Islamic Arts Museum Malaysia, National Visual Arts Gallery, VFA, Austrian Embassy, MyCreative, AESOP, ArtFriend, Sovereign Art Prize, SGFA, Timeless Green and others.

# VISION

Gallery Weekend Kuala Lumpur 2017 developed into strength with the invaluable participation of galleries, institutions and supporters, all of who share a quality vision of cultural encounter. GWKL thus further develops its premiere branding and distinctive development as an international marquee event in the bustling metropolis of Kuala Lumpur.

GWKL 2017 embraced the rich contemporary and heritage narratives at work in Malaysia, combining outstanding public and private spaces with cultural tours, stay and dining experiences, and ofcourse, the Luminary Pulse feature with internationally renowned talent. GWKL as a marquee platform supports meaningful exploration and discovery of, what is for many, a new region, with all its contrasts, compliments, controversies and distinction.

The remarkable community support reminded us of the power of belief and commitment in our creative endeavours. We were fortunate to have partners in: Brussels, Barcelona and Cracow.

Thank you to the Luminary Pulse Speakers: Dr. Hugo Weihe, Sarah Ichioka, Herwig Kempinger and Dr. Christine Boehler, who shared not only valuable experiences, expertise and insights, but their curiosity .

We have benefitted again from the exploration of the multidiscipline, visually, verbally and cerebrally.

Whether you live near or far, you will be treated as a favoured guest here, at the Gallery Weekend Kuala Lumpur. All are welcome.

Shalini Ganendra  
*Founder*

## select press quotes

*The next Berlin?... Dealers and museums join forces to put the Malaysian capital on the art map.* The Art Newspaper

*The GWKL offers the public an in-depth exploration of the country's art.* Singapore Business Times

*That the GWKL is able to attract such personalities is a measure of its growing cultural weight in an increasingly competitive and globalised field.* City List

*The GWKL marquee, with its cosmopolitan draw, is firmly grounded in a Malaysian ethos.* Kakiseni

*It would seem that the Gallery Weekend Kuala Lumpur is developing into a sustainable, wide-reaching project that will help cement Kuala Lumpur's reputation as a world cultural leader.* Huffington Post

*By unfurling its artistic fabric, GWKL pushes the city to collaborate in unprecedented ways, generating self-awareness amongst various galleries, centres, institutions and arts professionals. Importantly, this provides a starting point from which to discuss how the city's identity could be mapped in the future.* Ocula



# *MAP participants GWKL 2017*



# SPECIAL FEATURES

## FRIDAY 8TH

### CURATORIAL CONVERSATIONS

Luminary Talk with Herwig Kempinger & Christine Boehler

4.30pm Refreshments

5.00-6.00pm Program

National Visual Art Gallery Auditorium

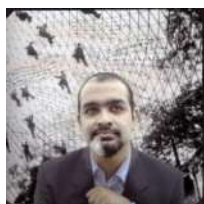


ZAIN AZAHARI Private Collection

11:00am – 12:30pm

Story of Collecting

FREE but with limited places.



HOM Art Trans

2:30pm-4:00pm

Gallery Tour with Director, Bayu Utomo Radjikin



SOKA GAKKAI Gallery Tour

3:00pm

Guided Exhibition Tour

FREE but with limited places.



SHALINI GANENDRA FINE ART

5:00pm-7:00pm.

Roots: Emerging Malaysian

Afiq Faris & Shaq Koyok: Artist's Walk Through...

## SATURDAY 9TH



Luminary Program Talk with Hugo Weihe & Sarah Ichioka

#:00pm Islamic Arts Museum Auditorium

Dr.Hugo Weihe, Former Christie's Asia, CEO of Saffron Art, Collecting & Creating



Islamic Arts Museum Tour

11:00am

FREE entry and Tour



Badan Warisan Walk Through

11:00am

FREE entry and Tour



G13

11:00am-12:00pm

Faizal Suhif: Artist's Tour



ZAIN ASAHARI Private Collection

11:00am-12:30pm

Story of Collecting

FREE but with limited places.



RAW Art Space

7:00pm RED & GOLD Exhibition Opening

10:pm-late Exhibition Opening After Party

## SUNDAY 10TH



RIMBUN DAHAN

9:00-11:00am Guided Tour of Garden and grounds with refreshments.

FREE admission.



NADINE FINE ART

11:00am-4:00pm

Conversations with the Artist, YUSUF MAJID



ZAIN AZAHARI Private Collection

11:00am-12.30pm

Story of Collection

FREE but with limited places.



SEGARIS

11:00am – 12:30pm

Bintang Exhibition Tour



SHALINI GANENDRA FINE ART

3:00pm-5:00pm

UNITY Opening by Taylor's University and Veritas EF



RAKSASA PRINT STUDIO

4:00-6:00pm

Bring your own T-Shirt! Live Printing



## **galleries**

Artemis Art  
Edge Galerie  
G13  
Galeri Chandan  
Hom Art Trans  
Interpr8  
Nadine Fine Art  
Pipal Fine Art  
Art Row, Publika  
Raksasa Print Studio  
Raw Art Space  
Rimbun Dahan  
Segaris  
Shalini Ganendra Fine Art  
Sutra Gallery  
Taksu  
Zain Azahari Collection

## **institutions**

Islamic Arts Museum Malaysia  
National Visual Arts Gallery  
National Textile Museum  
Badan Warisan  
Soka Gakkai Malaysia

## **public art**

Arts on the Move / Think City  
Bespoke City Tours

# luminary pulse series



# LUMINARY PULSE I: HERWIG KEMPINGER & CHRISTINE BOEHLER

---

## *Curatorial Conversations*

National Visual Arts Gallery, Auditorium

Friday 8<sup>th</sup> December, 5pm



# L U M I N A R Y : H E R W I G K E M P I N G E R

---



Herwig Kempinger is currently President of the Association of Visual Artists Vienna Secession, Austria.

Working mainly in photography, he has exhibited internationally since 1994 and awards include the Fine Arts Prize of the City of Vienna (2010) and the Austrian Art Award (1992). Kempinger's international exhibitions include Neuen Galerie, Graz, (2008) Museum der Moderne Salzburg (2006) and Biennale São Paulo (1994). In 2007, Lentos Kunstmuseum dedicated a comprehensive retrospective to his work.

# LUMINARY : Dr. CHRISTINE BOEHLER

---



Dr. Christine Boehler is an Austrian curator, writer and producer. She has set up internationally acclaimed funding systems for arts and culture, initiating and realizing exhibition and publication projects, developing lasting partnerships, art awards, residencies and university programmes.

She founded and curated Literatur + Medien, a project involving digital luminous walls with texts of Austrian writers, between 1996 and 2015. She is the founding director of the culture program of Erste Foundation, an Austrian association which aims to promote Central, East and Southeast European art, by collecting artworks which played a significant role in the European art history.



# LUMINARY PULSE II: HUGO WEIHE & SARAH ICHIOKA

---

## *Creating & Collecting*

Islamic Arts Museum, Malaysia, Auditorium

Saturday 9<sup>th</sup> December, 3pm





# LUMINARY : Dr. HUGO WEIHE

---



Former International Director of Asian Art at Christie's and currently CEO of Saffronart, Dr. Hugo Weihe is one of the foremost experts in Asian art and antiquities. He brings over three decades of knowledge and experience.

Hugo joined Christie's in 1998 and founded the department of Indian and Southeast Asian Art. During his time, he was instrumental in catapulting the Asian Art department—specifically the Indian department—to a strong market leadership position. Prior to Christie's, Hugo has worked as a Specialist with Sotheby's (New York) and Galerie Koller Auctioneers (Zurich).

# LUMINARY : SARAH ICHIOKA

---



Sarah Ichioka's diverse portfolio includes management, strategic planning, consultancy and curatorial roles for some of the world's most respected institutions, including La Biennale di Venezia, the LSE Cities Programme, Tate Modern, New York City's Department of Housing, and Singapore's National Parks Board. Before relocating to Asia in 2014, Ichioka was Director (Chief Executive) of The Architecture Foundation (UK), for five years.

She has been honoured as one of the Global Public Interest Design 100, by Honorary Fellowship of the Royal Institute of British Architects, and the British Council/ Clore Foundation's Cultural Leadership International Fellowship.

# gallery program

# EDGE GALERIE

---

## *Noor Mahnun Solo Exhibition: Disco Lombok Still Life*



Left: Noor Mahnun, *Fish Head*, 2017, oil on linen, 30.5 x 30.5 cm, 20 x 30 cm (diptych).  
Right: Noor Mahnun, *Moka Pot – Single*, 2017, oil on linen, 30.5 x 30.5 cm, 20 x 30 cm (diptych).



# GALERI CHANDAN

---

## Group Exhibition: *Platform 3 'Thrownness'*



Images from exhibition tour of Platform 23..

# ARTEMIS ART

## *General Exhibition*



Images from exhibition tour of exhibition at Artemis art.



# PIPAL FINE ART

---

## *General Exhibition*



Above: *Shadow of the Moon.*



# ART ROW, PUBLIKA

## *Artist's Studio Spaces*



Top: Art Row Tenant Potions @ Lot 53.  
Left: Art Row Tentant Galeri Titikmerah  
Right: Art Row Tenant RAKU @ Lot 54.



# INTERPR8

## *Southeast Asia: Selected Works*



interpr8  
art space

Presents

### **SOUTHEAST ASIA : SELECTED WORKS**

A selection of Southeast Asian  
contemporary art from  
Indonesia, Malaysia, Philippines  
and Vietnam.

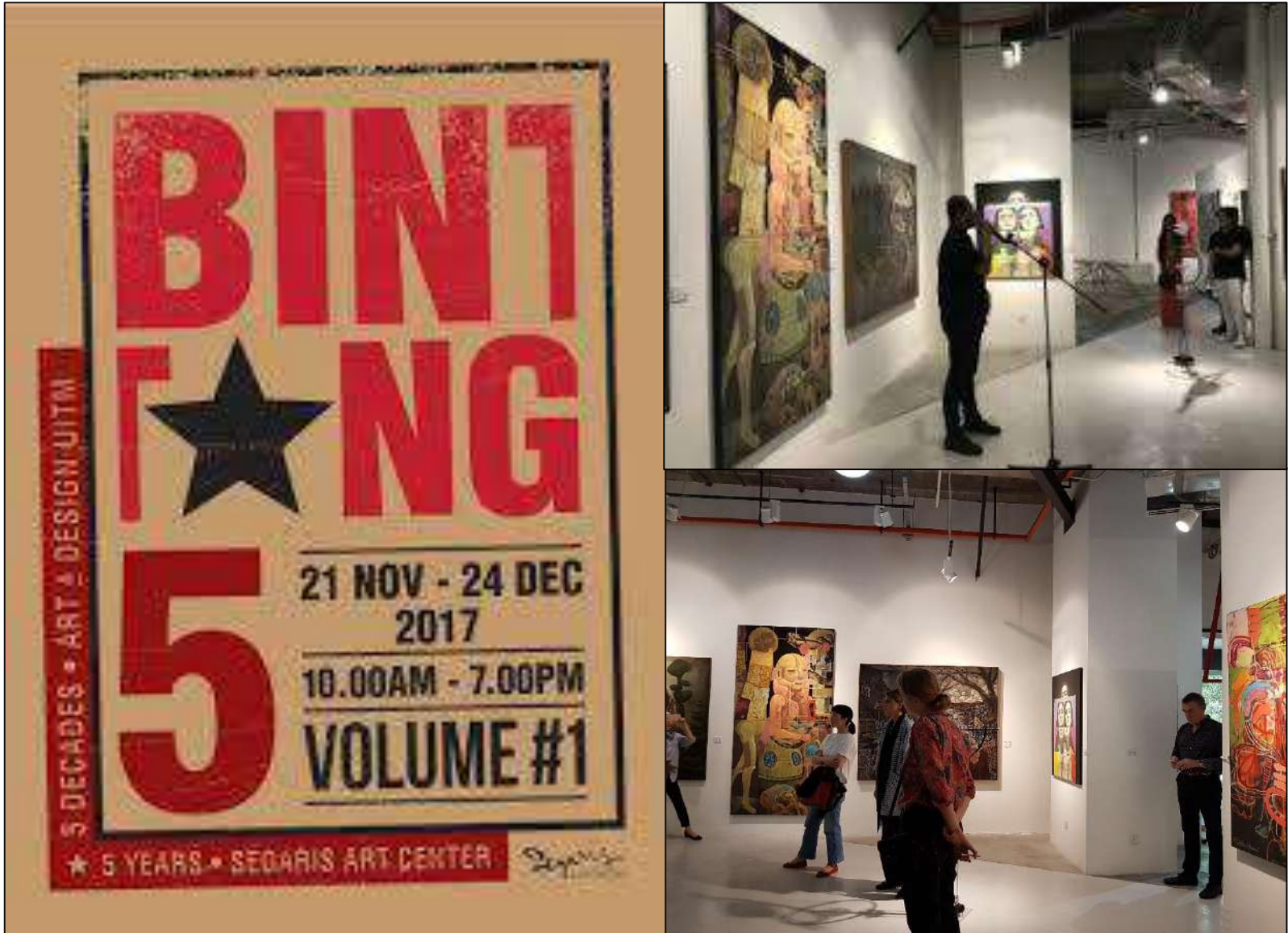


Images from exhibition tour of Southeast Asia Selected Works.

# SEGARIS

## *Bintang 5 Exhibition*

### Exhibition Tour

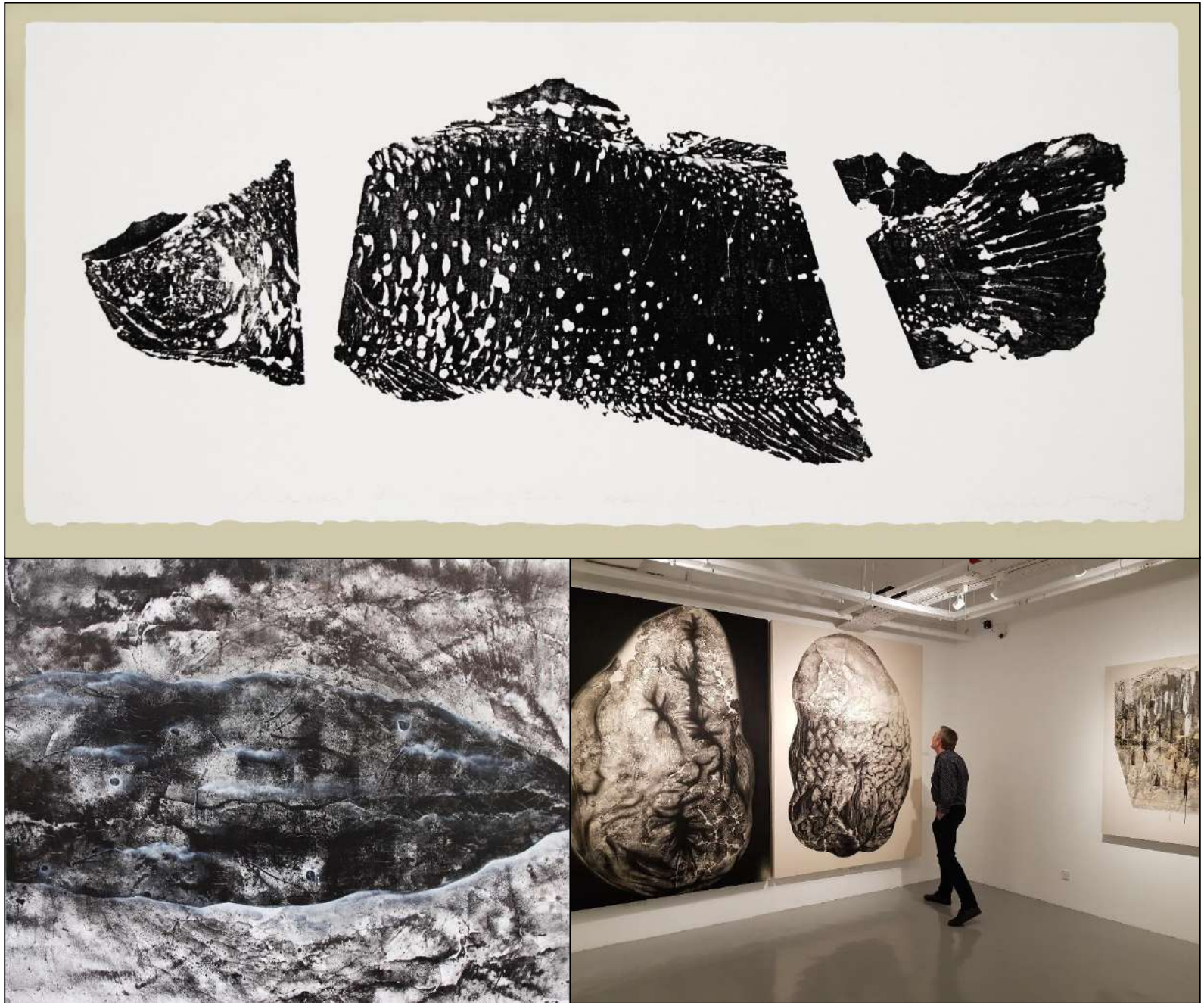


Images from exhibition tour of Bintang 5.



# G 1 3 GALLERY

## *Faizal Suhif: Solo Exhibition*



Images from Faizal Suhif opening.



# HOM ART TRANS

## *Yee I Lann: The Writer's Portrait Series – A Revisit Showcase*



Images from Showcase opening.

# NADINE FINE ART

---

## *South East Asian Icons*



Above: Made Arya Palguna, *Enter the Dragon*, 200 x 300 cm, Acrylic on canvas.



# RAKSASA PRINT STUDIO

*Studio Open to public: Introduction to Printing*



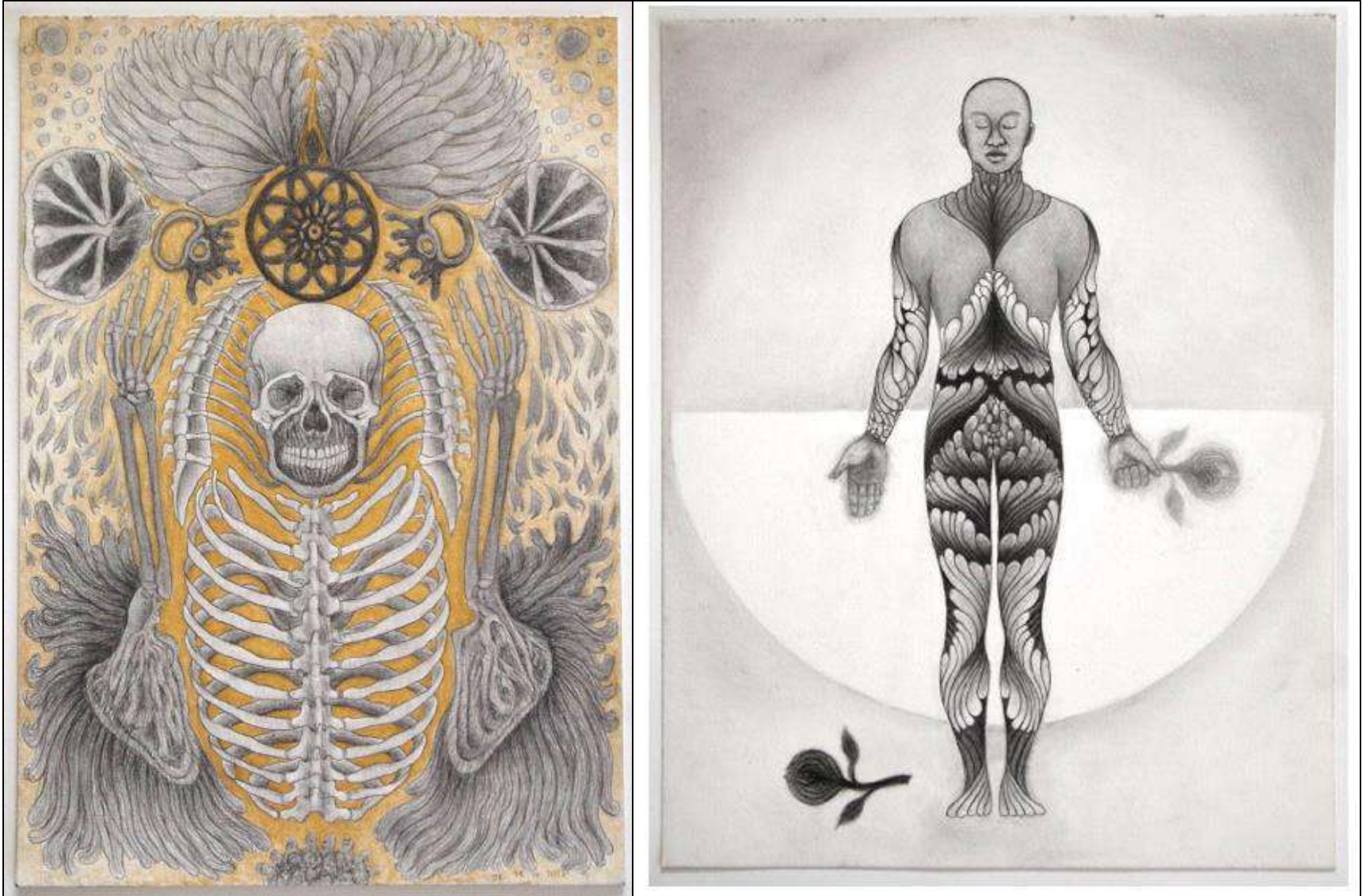
Images of students in action at Raksasa Print Studio.



# RAW ART SPACE

---

## *RED & GOLD: New works by Jerome Kugan*



Left: Jerome Kugan, *The Internalised SelfEclipse* (*Let's Litter This Imperfect World with Flowers*, 2017, pencil on paper)  
Right: Jerome Kugan, *Memento Mori* (*Don't get caught with a Dead Man's Smile*), 2017, pencil and poster color on paper.



# SHALINI GANENDRA ADVISORY

---

## *ROOTS: Emerging Malaysia* *Artists' Talk and Exhibition Walk*



*Above works Left to Right: Afiq Faris, Shaq Koyok, and Alena Murang.*

# SUTRA GALLERY

---

## *Group Exhibition: The Blue Mountain*



Above: Poster Image from Blue Mountain Exhibition.



# TAKSU GALLERY

## Group Exhibition: *Reflections*



Images from exhibition tour of Reflections.



# RIMBUN DAHAN

---

## Zulkifli Lee Solo Exhibition: *Material, Order & Chance* Garden Tour & Exhibition View

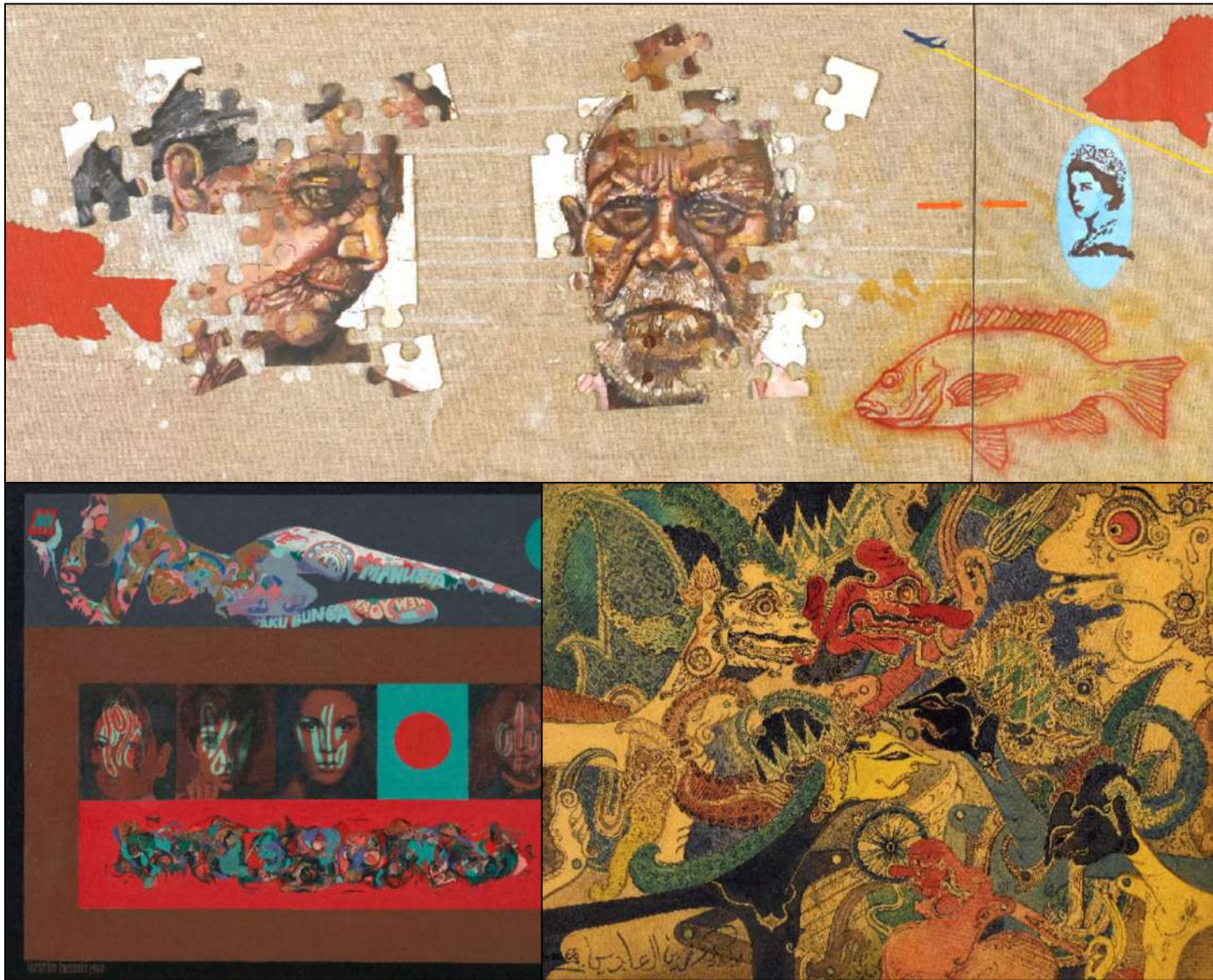


Images from garden tour and exhibition view of Zulkifli Lee Exhibition.



# ZAIN AZAHARI COLLECTION

## *Private Collection*



Above: Anuerendra Jegadeva, *Same Old Fish*, 2013, oil on canvas, 40 x 80 cm, 40 x 20 cm, (diptych).

Left: Ibrahim Hussein, *Farewell to New York*, 1969, printage, acrylic on canvas, 123 x 150 cm.

Right: Nik Zainal Abidin, *Untitled*, 1968, watercolour on paper, 24 x 34 cm.



# ISLAMIC ARTS MUSEUM MALAYSIA

---

## *Curator's Daily Tour*



Images from the Curator's Daily Tour of the Permanent Collection of the Islamic Arts Museum.

website: [gw-kl.com](http://gw-kl.com)    instagram: [galleryweekendkl](https://www.instagram.com/galleryweekendkl)    twitter: [@GalleryWkndKL](https://twitter.com/GalleryWkndKL)    fb: [GWKL](https://www.facebook.com/GWKL)



# NATIONAL VISUAL ARTS GALLERY

*Kl Biennial 2017*



Images from exhibition showcase of kl biennial.

# NATIONAL TEXTILE MUSEUM

## *Permanent Collection*

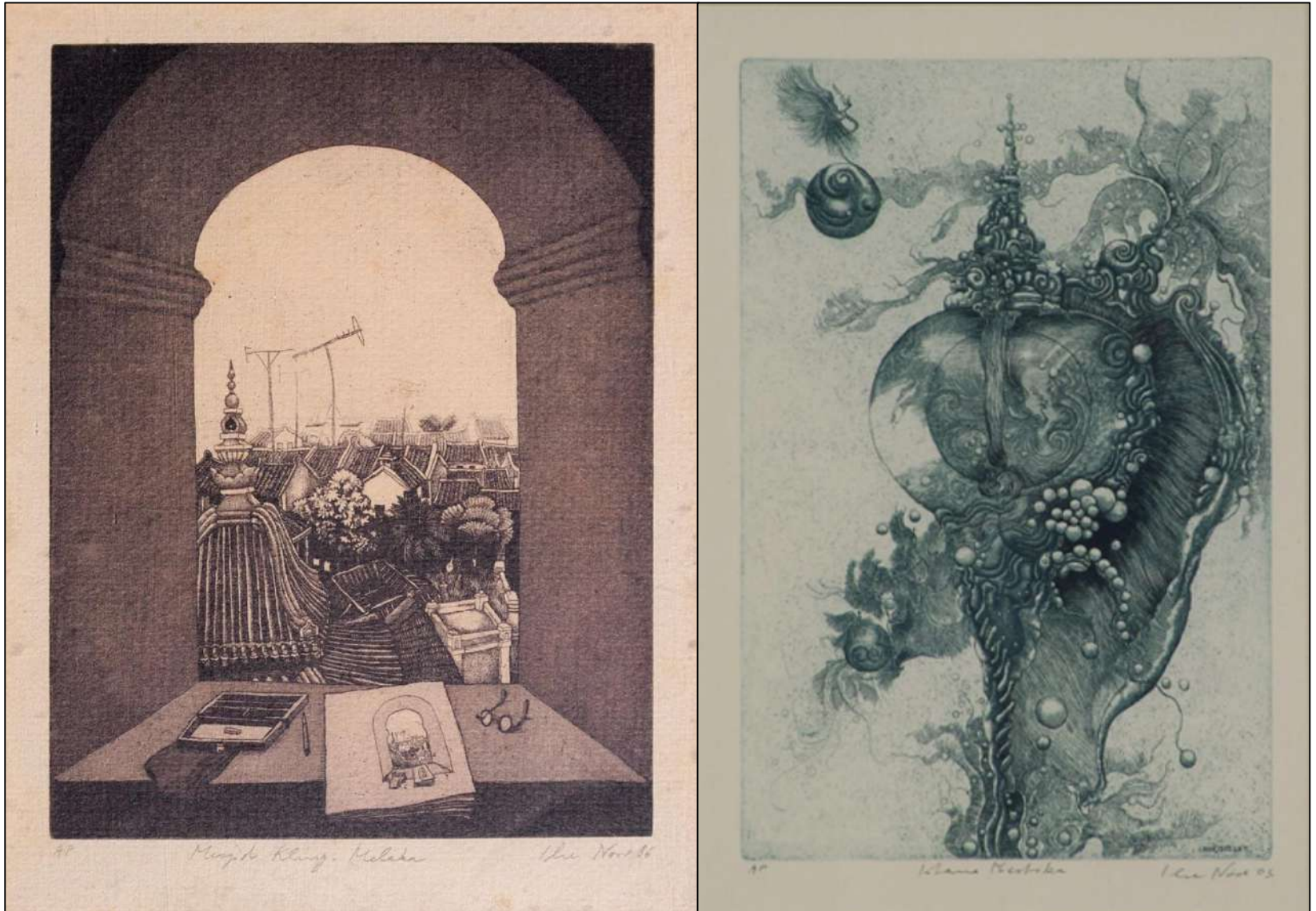


Images of the Permanent Collection of the National Textile Museum.



# BADAN WARISAN

## *Ilse Noor: Earisan Nusa Etchings*



Left: Ilse Noor, *Masjid Kling Melaka*, 1986, etching on paper.

Right: Ilse Noor, *Klana Mestika*, 2003, etching on paper.



# SOKA GAKKAI GALLERY

## *Cheung Pooi Yip Solo Exhibition: Reflecons from My Heart*



Poster and actions shot images from the opening night of Cheung Pooi Yip at Soka Gakkai Gallery.

# ARTS ON THE MOVE THINK CITY

---

## *Kucing Ta Mu Mural, Masjid Jamek LRT station*



Kucing Ta Mu Mural, Masjid Jamek LRT station.



# BESPOKE CITY TOURS

---



Images: Kampung Baru, KL.

# Galleries PROGRAM

Daily 11am – 6pm



**Shalini Ganendra**  
**Fine Art**  
**PJ**  
*Roots, Emerging Malaysia*



**Sutra Gallery**  
**Titivangsa**  
*Group Exhibition: The Blue Mountain*



**TAKSU Gallery**  
**Titivangsa**  
*Group Exhibition: Reflections*



**Rimbun Dahan**  
**Kuang**  
*Zulkifli Lee  
Solo Exhibition: Material, Order & Chance*



**Raw Art Space**  
**KL Central**  
*RED & GOLD: New works by Jerome Kugan (opening 7pm Saturday)*



**Zain Azahari**  
**Private Collection**  
*11:00am – 12:30pm  
Story of Collecting*



**Raksasa Print Studio**  
**KL Central**  
*Studio Open to public: Introduction to Printing*



**Pipal Fine Art**  
**Mont Kiara**  
*General Exhibition (Closed Sunday)*



**Nadine Fine Art**  
**PJ**  
*South East Asian Icons*



**Interpr8**  
**Mont Kiara**  
*Southeast Asia: Selected Works Indonesia, Malaysia, Philippines, Singapore and Vietnam*



**G 13**  
**PJ**  
*Faizal Suhif Solo Exhibition*



**Badan Warisan**  
**KL Central**  
*Ilse Noor: Warisan Nusa Etchings*



**Galeri Chandan**  
**Mont Kiara**  
*General Exhibition (Closed Sunday)*



**Edge Galerie**  
**Mont Kiara**  
*Noor Mahnun Solo Exhibition: Disco Lombok Still Life*  
*General Exhibition*



**ART ROW, Publika**  
**Mont Kiara**  
*Artist's Studio Spaces, open to public*



**Artemis Art**  
**Mont Kiara**  
*General Exhibition*



**Arts on the Move (Think City)**  
**KL Central**  
*Kucing Ta Mu Mural Masjid Jamek LRT station*



**HOM Art Trans**  
**Ampang Jaya**  
*Yee I Lann: The Writer's Portrait Series – A Revisit Showcase*

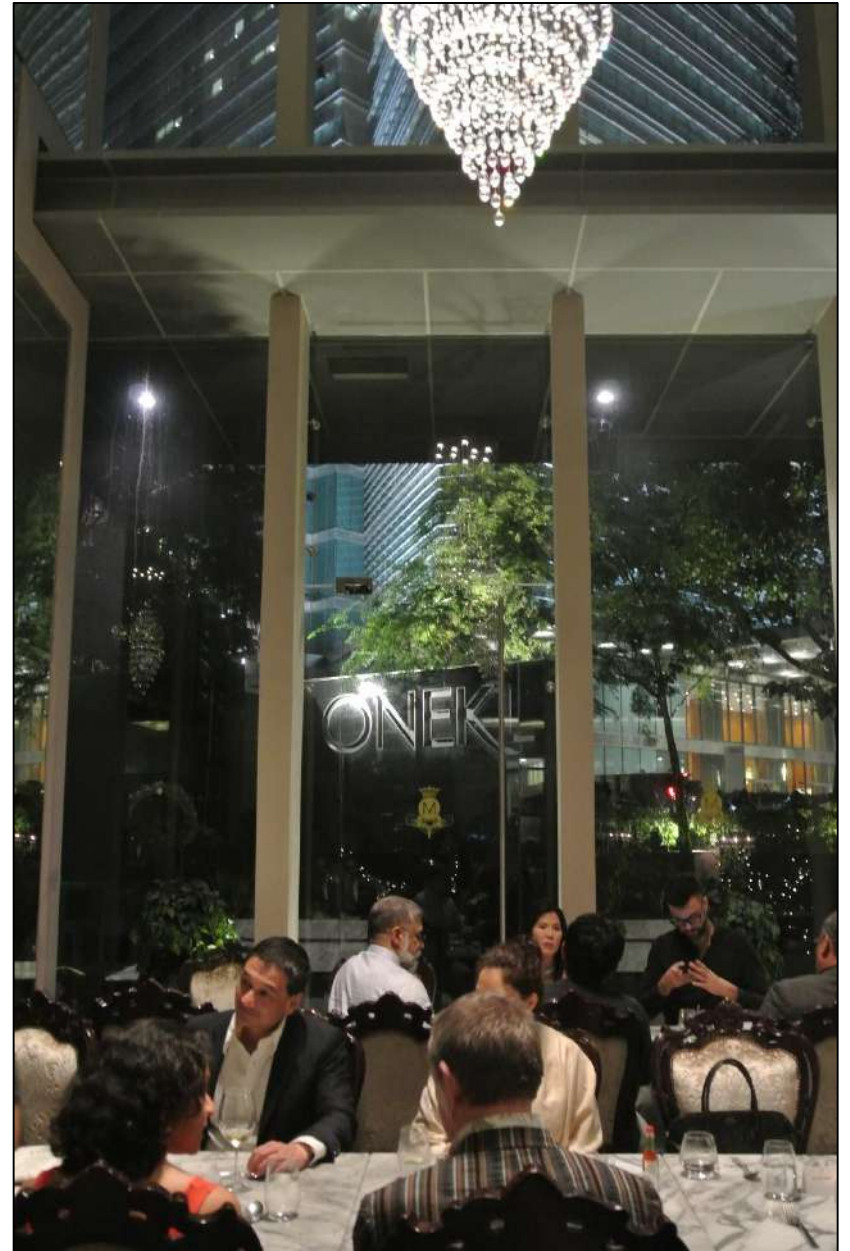


# gourmet partners



# MARINI'S GROUP

---



MARINI'S ON 57<sup>TH</sup>. MARINI'S GRAND CAFFE; & MARBLE 8  
*Buffalo Mozzarella topped with fresh basil and served with a red wine vinegar reduction.*

website: [gw-kl.com](http://gw-kl.com)    instagram: [galleryweekendkl](https://www.instagram.com/galleryweekendkl)    twitter: [@GalleryWkndKL](https://twitter.com/GalleryWkndKL)    fb: [GWKL](https://www.facebook.com/GWKL)

# TUJOH

---



*Confit of Chicken Rendang with Roasted Coconut Rub , Rice lontong , Braised Summer Vegetables in Coconut Cream and A Sprinkle of Chicken Floss*

# LOCKER AND LOFT

---



*Top: Cocktails*

*Below: Braised Tuna Steak Salad served on a bed of rocket , tomato and mozzarella.*



# THE CANTEEN BY CHEF ADU

## *At the National Textile Museum*

---



*Fusion fried rice.*

# MISS ELLIE TEA HOUSE

---



*Lemon Tart topped with shaved white chocolate.*

# select press coverage 2017

## international

Singapore Business Times 24/11/17  
The Huffington Post 1/11/17  
Truly Asia TV 1/12/17  
Time Out KL 1/12/17  
Harrods Magazine 12/17  
Life Style Asia 14/12/17  
Singapore Business Time Mag 12/17  
OCULA 8/01/2018

## radio

BFM Bigger Picture 5/12/17

## local

Buro 24/7  
Think City 10/12/17  
The City List 11/18/17  
Kakiseni 23/11/17  
Vision KL 28/11/17  
Malaysia Truly Asia 3/12/17  
The Artling Artzine 06/12/17  
Edge Newspaper 04/12/17  
Art KL-itique 30/12/17



# supporters





Save the dates for next year GWKL 2018

November 29<sup>th</sup> - December 2<sup>nd</sup>, 2018

E: [admin@gw-kl.com](mailto:admin@gw-kl.com)